

# a2b

New functionality

## VSB Modulator EVA-210



English

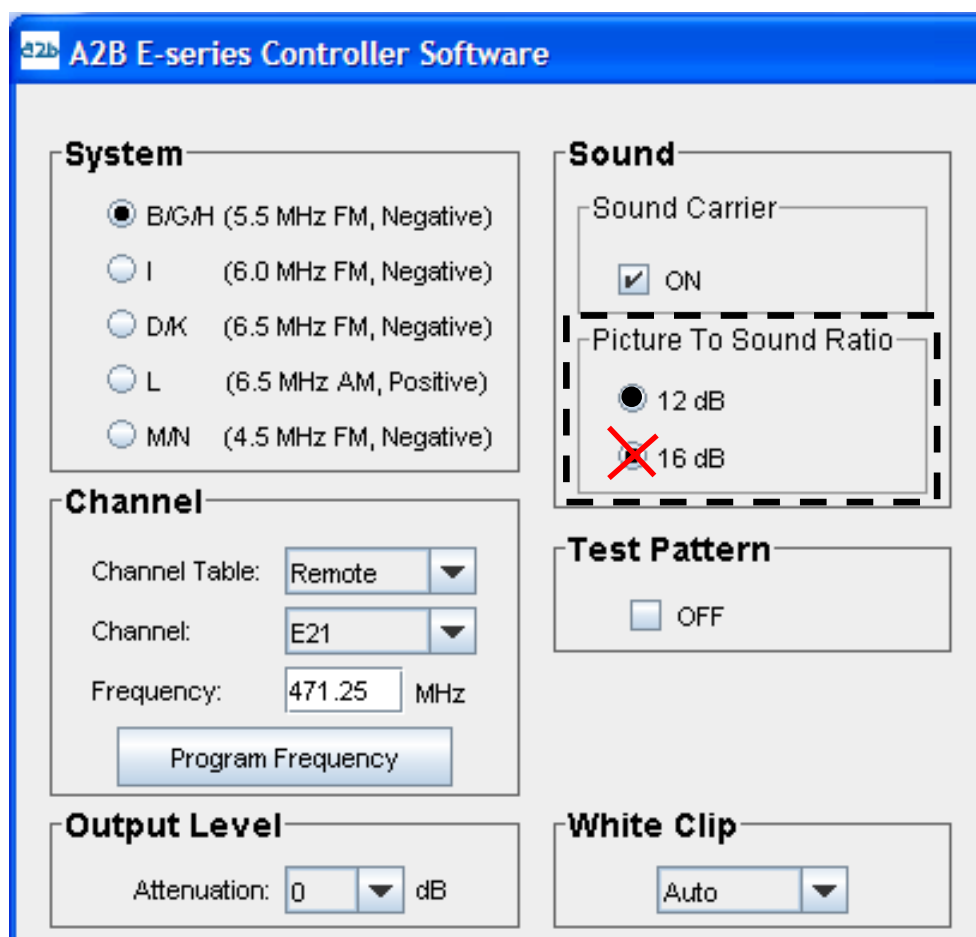
# design for TV

# 1. Picture to sound ratio

## New functionality

Due to change of hardware in EVA-210 from 2010-03-xx there is a limit in "Picture to Sound ratio". The factory default is changed to 12/20 dBc, picture to sound ratio. If that setting is changed from 12 dB to 16 dB the NICAM subcarrier will be decreased from -20dbc to -24dBc.

If there is a need to use the 16dB choice for the Mono subcarrier there is a possibility to adjust the Stereo subcarrier level from -24 dBc to -20dBc with a potentiometer inside the unit.







## A2B Electronics AB

Södra Allén 23-25, 591 37 Motala

P.O. Box 14, 591 21 Motala

SWEDEN

Phone +46 141 229100

Fax +46 141 229101

E-mail [market@a2b.se](mailto:market@a2b.se)

Rev 1B

To view our full line of Professional E-series Products, visit our Web site

[www.a2b.se](http://www.a2b.se)