



# Added Functions WSS Subtitling

ECA-100

Professional Digital QAM Receiver

English



# design for TV

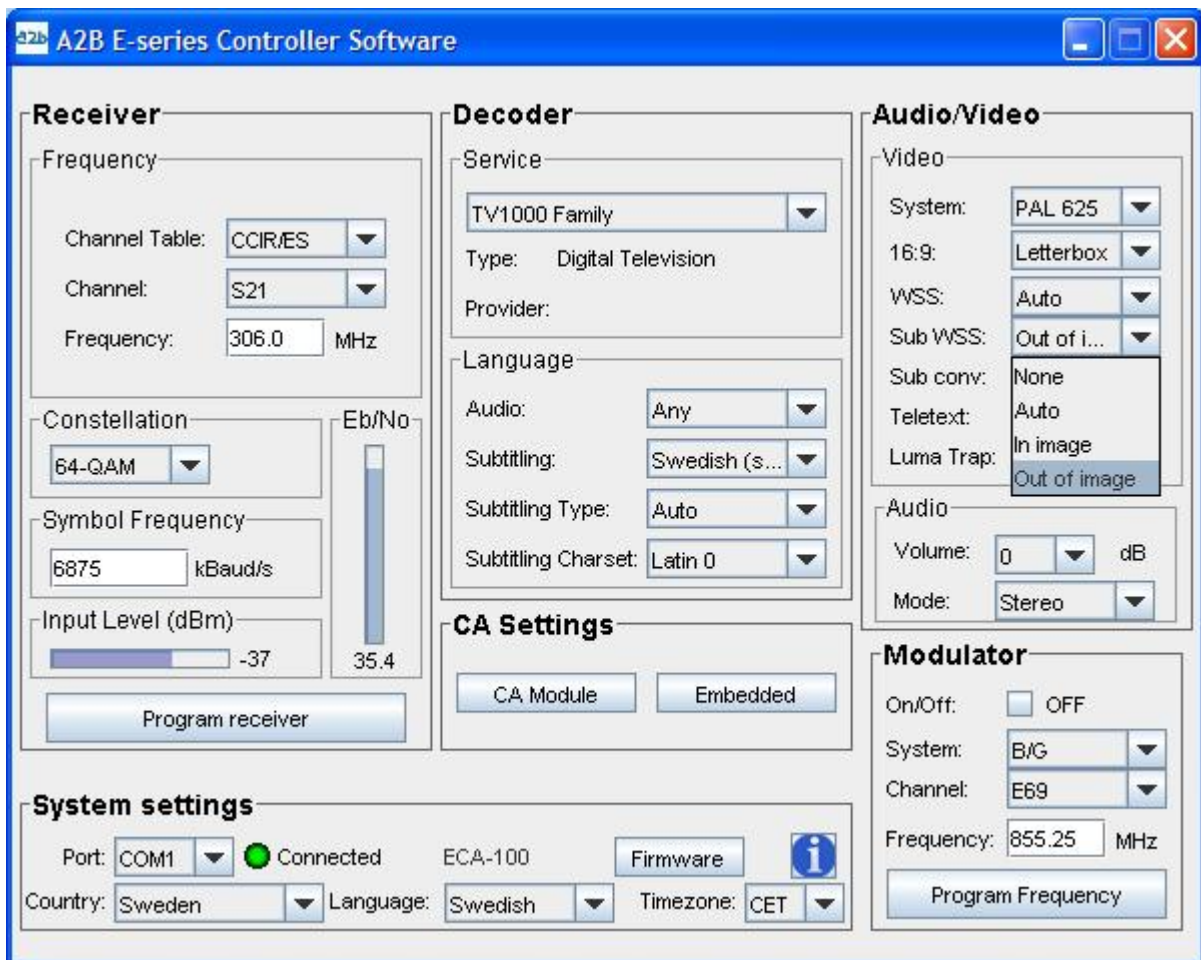
Following functions are added to the ECA-100 for supporting DVB subtitles:

1. Sub WSS
2. Sub conv

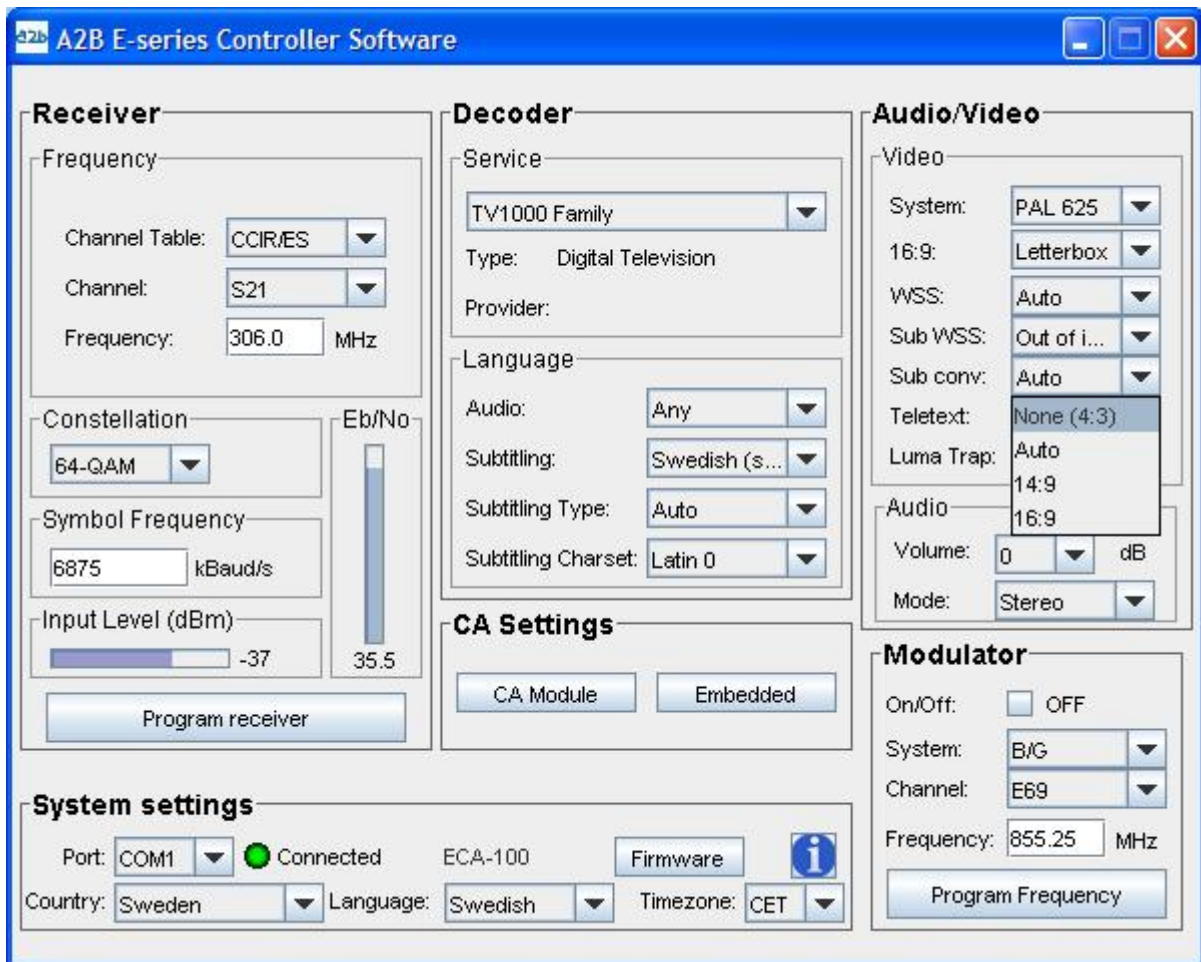
Sub WSS gives you the opportunity to decide where to place the text on the TV screen. You can select [Out of image] (which is default), [In image], [Auto] or [None]. See picture below.

If you don't have the picture as below, please check that you have the latest firmware version 1.3. Click on [ i ] to see what firmware there is in the unit. If you don't have version 1.3 you can download it from

[www.a2b.se/support.php](http://www.a2b.se/support.php)



It is also possible to choose different setting for "Sub conv" such as [None(4:3)] (which is default), [Auto], [14:9] or [16:9]. See picture below.



**NOTE!** At this moment this new functions is only available for PC Controller SW. This functions not available for Teletext subtitling.

Read more at: [http://en.wikipedia.org/wiki/Widescreen\\_signaling](http://en.wikipedia.org/wiki/Widescreen_signaling)



## **A2B Electronics AB**

Södra Allén 23-25, 591 37 Motala  
P.O. Box 14, 591 21 Motala  
SWEDEN

Phone +46 141 229100

Fax +46 141 229101

E-mail [market@a2b.se](mailto:market@a2b.se)

To view our full line of Professional E-series Products, visit our Web site

**[www.a2b.se](http://www.a2b.se)**